

2019 CT\RI DISTRICT CHAMPIONSHIP REGATTA

Regatta Sailing Instructions



1. JURISDICTION:

This regatta is organized by Lightning Fleet 6 located at Housatonic Boat Club (HBC), Stratford, CT. Races will be sailed under the management of the HBC Race Committee.

2. RULES:

The regatta shall be governed by the Racing Rules of Sailing, 2017-2020 including the US Sailing Prescriptions, 2017-2020; the International Lightning Class (ILCA) Rules; the Notice of Race (except where modified by the Sailing Instructions); and the Sailing Instructions.

3. NOTICES TO COMPETITORS:

Race results and announcements will be given at the HBC clubhouse deck and shall be posted on the Racing Bulletin Board located alongside the clubhouse entry door.

4. SIGNALS MADE ASHORE:

Signals made ashore will be displayed on the Race Committee boat or on the HBC flagpole on the deck.

5. SCHEDULE OF RACES:

Date	Event	Time
June 22, 2019	Competitor's Meeting	10:00 am
	Harbor Gun	10:30 am
	Warning Signal for First Race.	11:55 am
	Races will continue until "N" over "A" is displayed by RC boat.	
June 23, 2019	Harbor Gun	09:30 am
	Warning Signal for First Race.	11:00 am
	Additional races will follow, as conditions permit for up to a total of six races for the regatta.	

6. RACING AREA:

The racing area will be Long Island Sound, approximately 1.5 nm southeast of the Housatonic River Bell (C1) as indicated on the attached image.

7. THE COURSES:

- a) Course "W" (Whiskey) - A- : Course Board will display "W-A"
Twice around a windward/leeward course, finishing downwind.
- b) Course "W" (Whiskey) - B- : Course Board will display "W_B"
Twice around a windward/leeward course with an extra windward leg, finishing upwind.

There **may** be an offset mark set approximately 6 boat lengths away from the windward mark. If an offset mark is set, both marks must be rounded to port at the weather mark.

SEE APPENDIX A for COURSE DIAGRAMS

2019 CT\RI DISTRICT CHAMPIONSHIP REGATTA

Regatta Sailing Instructions



8. MARKS:

- a) The starting mark / leeward mark shall be an orange or yellow tetrahedron inflatable buoy.
- b) The windward mark shall be an orange or yellow tetrahedron inflatable buoy. If the Race Committee changes the windward leg by resetting the windward mark, the alternate mark used shall be an orange or yellow tetrahedron inflatable buoy and may have a black band on it. If the alternate mark is subsequently replaced by an additional course change, it will be replaced by the original colored tetrahedron buoy.
- c) The offset mark, if used, shall be a small orange or white round inflatable buoy. No offset mark will be used at the new windward mark if the windward leg is changed during a race.
- d) Boats shall leave all marks to port except in the case of a downwind finish, where the finish mark shall be left to starboard.

9. THE START:

- a) The starting line will be between and orange flag on the Race Committee Signal Boat and the starting mark.
- b) Races will be started using Rule 26, with the Warning Signal given five minutes before the starting signal. The Warning signal will be the Lightning Class Flag.
- c) A series of short blasts may be given approximately one minute before the five-minute starting sequence is begun as a courtesy notice to racers.
- d) Individual and General Recalls shall be in accordance with Rule 29.
- e) The Race Committee shall attempt to broadcast the sail numbers of any OCS boats on VHF Channel 72. Failure to make a broadcast or timely order of broadcast will not be grounds for redress. This changes rule 62.1.
- f) A boat starting later than 5 minutes after her starting signal will be scored Did Not Start (DNS). This changes rule A4.

10. CHANGE OF THE POSITION OF THE NEXT MARK

In the event of a wind shift, the Race Committee may change the direction of the windward leg by:

- a) Flying code flag "C" accompanied by sound signals.
- b) Display of a sign indicating a changed marker for the new course.
- c) The Race Committee may, at its discretion, shorten the course to not less than three legs.

11. THE FINISH:

- a) The finishing line will be between a mark of the course and the orange flag on the Race Committee Signal Boat.
- b) On a downwind finish, the finishing mark shall be left to starboard to allow a quicker start of the next race.

12. PENALTIES:

The 720° turns penalty as provided in Rule 44.2 shall apply with the additional provision that when an infringing yacht has its spinnaker drawing at the time of the infringement, drops it completely while taking her penalty, and resets it immediately and has it drawing after the penalty, the penalty is one full turn or 360° instead of two. This modifies Rule 44.

2019 CT\RI DISTRICT CHAMPIONSHIP REGATTA

Regatta Sailing Instructions



13. PROPULSION:

On a free leg of the course, when surfing (rapid accelerating down the leeward side of a wave) or planing is possible, the boat's crew may, in order to initiate surfing or planing, pump the sheet, but not the guy controlling any sail, but only once for each wave or gust of wind. When the mainsail is pumped, only that part of the sheet between the crew member handling the sheet and the first block on the boom shall be used. This modifies Rule 42.3(b).

14. TIME LIMITS:

- a) The time limit shall be 2 hours and 30 minutes. If no boat completes the course within the time limit, the race shall be abandoned and, if possible, resailed.
- b) On Sunday, June 23rd, no race shall start after 2:00 pm. All races not started by this time will be cancelled.

15. PROTESTS:

- a) Protests and requests for redress shall be submitted within 60 minutes from the time the Race Committee boat docks.
- b) The protest procedure will be modified. After a protest is lodged, there will be a pre-hearing involving one judge, the protestee, and the protester. If these three can unanimously agree on a resolution of the protest within approximately 10 minutes, then no protest hearing will be held. If the pre-hearing participants agree that the protested boat or protesting boat infringed a rule, then that boat will be penalized as prescribed in Rule 64. A pre-hearing will not be reopened.

16. SCORING:

- a) The low point scoring system of Appendix A shall apply.
- b) Scoring shall be based on the total scores for all races completed.
- c) When fewer than six races are completed, no scores shall be excluded. If six races are sailed, each boat's worst score shall be excluded.

17. SAFETY:

All boats are expected to comply with the safety equipment as specified by the ILCA and government regulations. Each boat must carry:

- a) Fluke-type anchor weighing not less than 4 pounds, with a line not shorter than 50 feet. The line shall be a minimum of 3/8 inches in diameter and shall be made of Nylon or Dacron. This line shall be used only for towing or anchoring.
- b) Compass
- c) Bucket with a minimum capacity of one gallon
- d) Throwable life preserver or cushion with an attached whistle
- e) Paddle
- f) Centerboard preventer

2019 CT\RI DISTRICT CHAMPIONSHIP REGATTA

Regatta Sailing Instructions



It is the responsibility of skippers and crews to wear life preservers when conditions warrant. In accordance with Rule 40, when code flag "Y" (yellow and red diagonal striped) is displayed on the Race Committee boat, wearing of life preservers is mandatory. If rescue operations are undertaken by the Race Committee Signal Boat, the fleet will continue per the Sailing Instructions. At the finish line they should note their finish in relation to the boat ahead and the boat behind them.

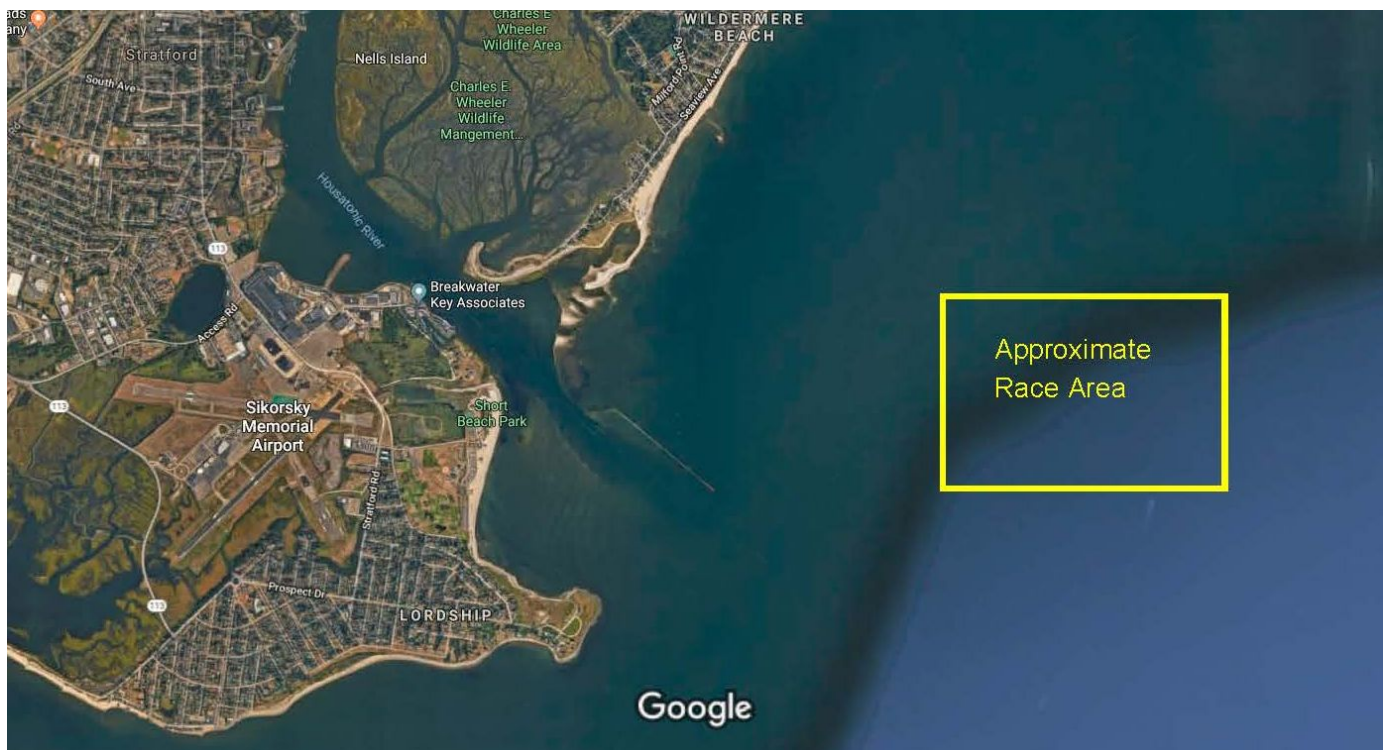
18. DISCLAIMER:

Housatonic Boat Club and Lightning Fleet 6 and their members and/or agents will not be responsible for any loss, damage, or injury that may occur to persons or property whether ashore or at sea as a consequence of the participation of any competing yacht in any way. Competitors' attention is drawn to RRS Fundamental Rule Part 1.

19. AWARDS:

There will be awards for the top three finishing teams.

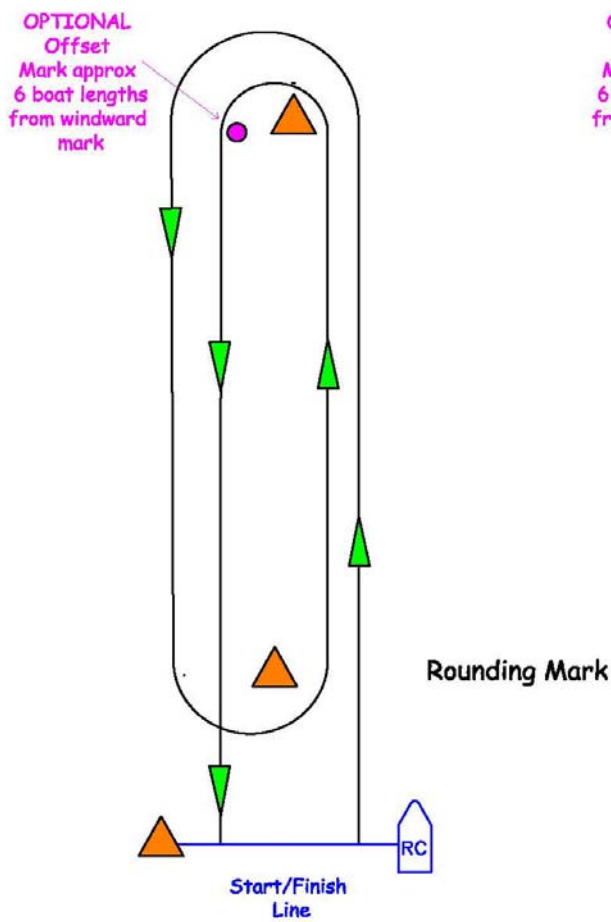
Racing Area



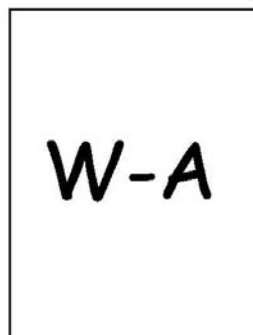


Appendix A
Course
Diagrams

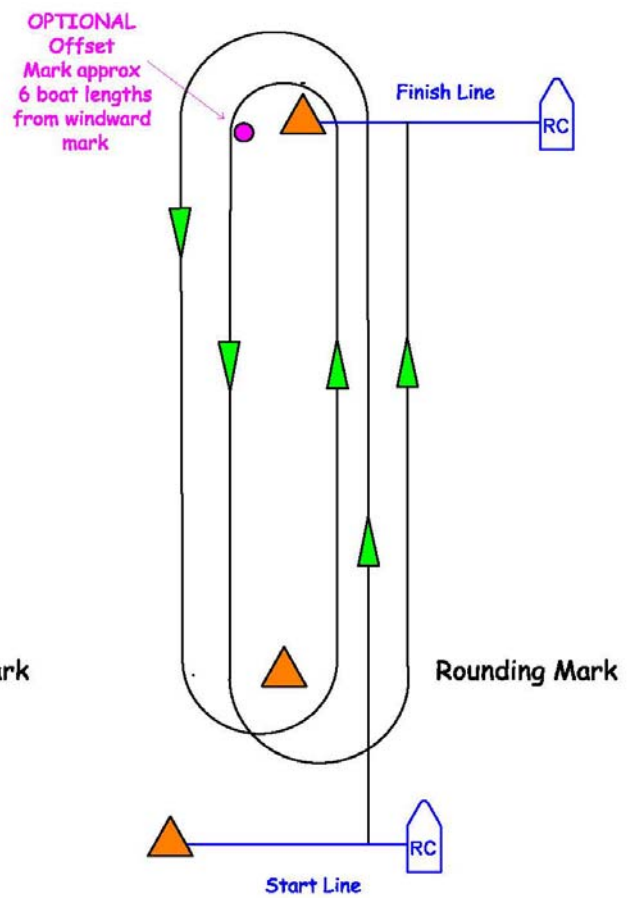
Course W-A



Course Board Example



Course W-B



Course Board Example

